



Madimack GT560

Installation and Operation Manual



INVERTER
technology

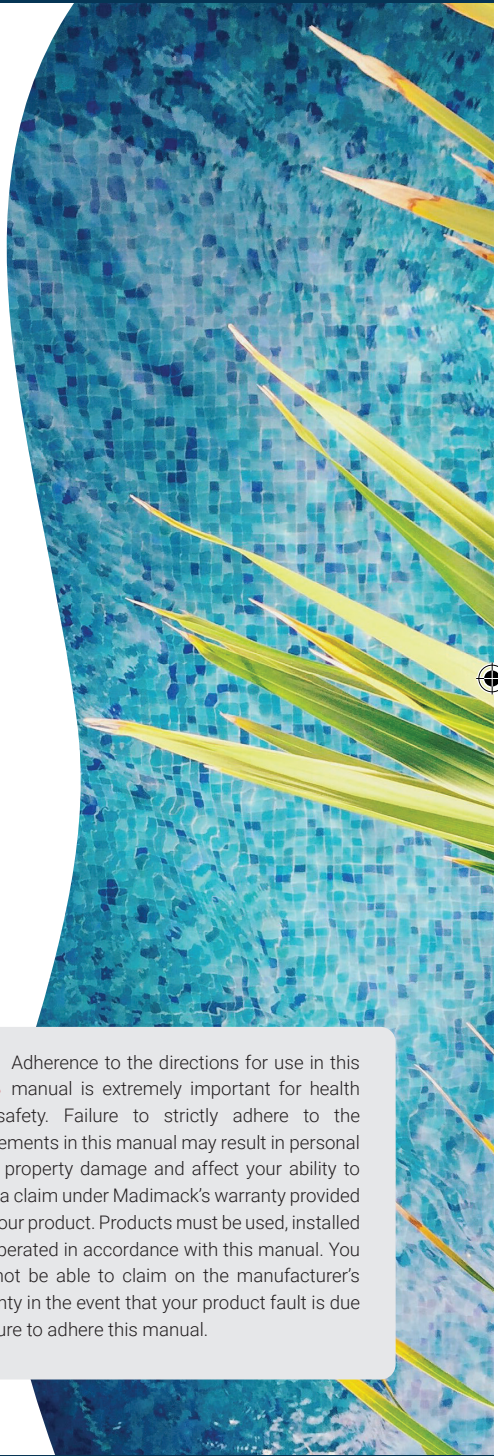
madimack





Contents

1. Main Components03
1.1 Cleaner03
1.2 Control Box04
1.3 Nylon Mesh Filter Board04
2. Connection and Operation05
2.1 Preparation Before Cleaning.....	05
2.2 Control Box07
2.3 Indicator Light of the Cleaner.....	08
2.4 After Cleaning08
3. APP09
3.1 Download Madimack APP.....	09
3.2 Wi-Fi Connection09
3.3 Homepage10
3.4 Timer10
3.5 Manual Mode11
3.6 Me11
4. Daily Maintenance11
4.1 Clean the Filter Basket11
4.2 Disassemble and Replace the Filter Board.....	12
4.3 Storage13
5. Fault Information13
6. Fault Codes13
7. Warranty and Exclusions14



CONGRATULATIONS AND THANK YOU FOR PURCHASING OUR GT560.

THIS MANUAL CONTAINS IMPORTANT INFORMATION THAT WILL HELP YOU IN OPERATING AND MAINTAINING THIS PRODUCT.



PLEASE READ THE MANUAL CAREFULLY BEFORE INSTALLATION & OPERATION AND RETAIN IT FOR FUTURE REFERENCE.



Adherence to the directions for use in this manual is extremely important for health and safety. Failure to strictly adhere to the requirements in this manual may result in personal injury, property damage and affect your ability to make a claim under Madimack's warranty provided with your product. Products must be used, installed and operated in accordance with this manual. You may not be able to claim on the manufacturer's warranty in the event that your product fault is due to failure to adhere this manual.





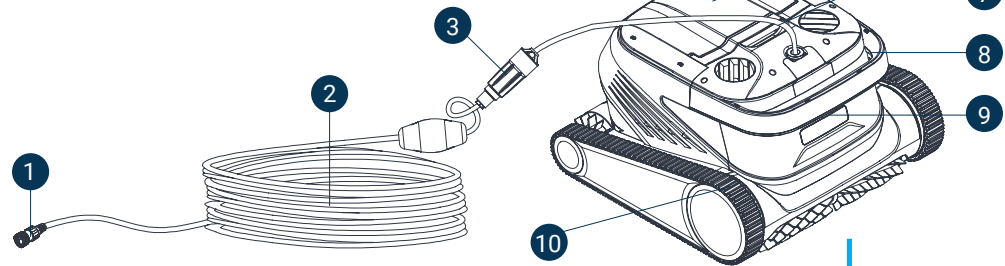
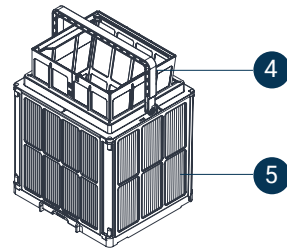
1. Main Components

1.1 Cleaner

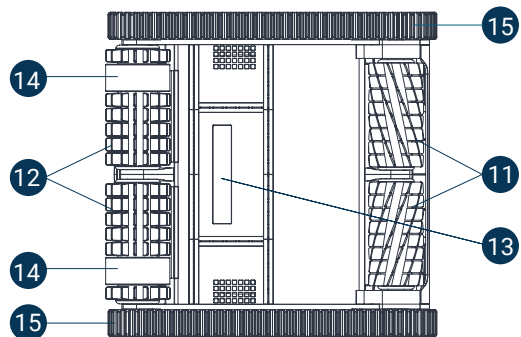
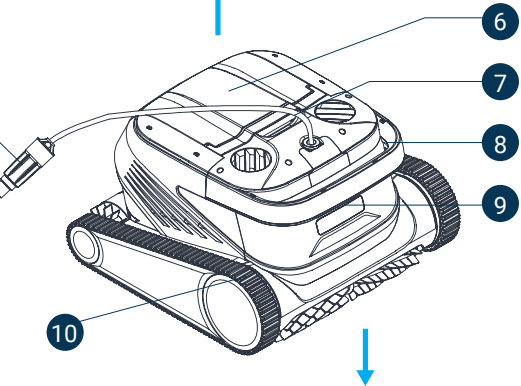
Madimack GT560 is an automatic swimming pool robotic cleaner specially created for cleaning swimming pools, substituting traditional cleaning methods of swimming pool floors, walls and waterline with an automatic, fully featured, efficient cleaning solution.

Equipped with Madimack's S-Clean technology, GT560 is suitable for all in-ground swimming pool surfaces and multiple shapes. Its dual-precision filter screen also filters pool water dirt and pollutants. It comes equipped with the Madimack App, providing users with a more intelligent, convenient and economic cleaning method for their pool.

- 1. Connector Assembly of the Buoyancy Cable
- 2. The Buoyancy Cable
- 3. Swivel
- 4. Net Inner Filter
- 5. Filter Basket (Including 4 Pieces Filter Boards)
- 6. Top Cover
- 7. Water Outlet
- 8. Handle



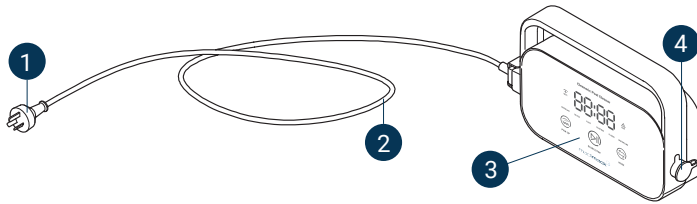
- 9. Indicator Light
- 10. Drive Wheel
- 11. Active Brush
- 12. Driven Brush
- 13. Water Inlet
- 14. Slip Ring
- 15. Track





1. Main Components

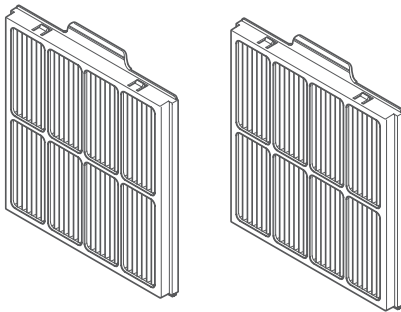
1.2 Control Box



- 1. Power Plug 4
- 2. Power Cord
- 3. Display & Operation Panel
- 4. Interface of the Buoyancy Cable

1.3 Nylon Net Filter Board (1F&2B)

(In addition to basket boards)



Notices



Please read the Instruction for Use carefully, and use this product according to the Instruction for Use. Our company is free of liability for any loss or injury from improper use.



Unless supervised by parents on site, children are forbidden from getting close to and using this product.



Protection grade of the control box is IP54. The control box should be used in a dry and shady place more than 3m away from the pool edge and more than 0.1m above the ground, away from direct sunshine. In addition, the control box shall be reliably grounded, and must be connected to circuit with Ground Fault Circuit Interrupter for use, and before use, GFCI shall be tested for normal work.



Only professional personnel of distributors with authorisation and training are allowed to disassemble, replace and repair parts of this product, otherwise, this product may lose warranty rights, and may cause personal injury.



Not suitable for above ground steel walled vinyl lined pools.



The cleaner can be used in swimming pool water only, not in other working environment; when the cleaner is working, personnel is forbidden from entering the swimming pool.





1. Main Components



Hold the handle when placing the cleaner into water or taking it out of water, do not lift the cleaner out of the pool pulling the buoyancy cable directly.



Do not use this product in the swimming pool immediately after or during the adding of chemicals and salt. Do not operate with liquid flocculating agent or other clarifying agents, otherwise, it may block or damage filter components of the cleaner.



When the cleaner is working, please do not touch the rotating components with hands directly.



Please use the cleaner in the following specified environment:

Working Depth	0.8-5m
pH	7-7.8
Chlorine	Maximum 5ppm
Working Temperature	10-35 °C
Salt	Maximum 5000 ppm

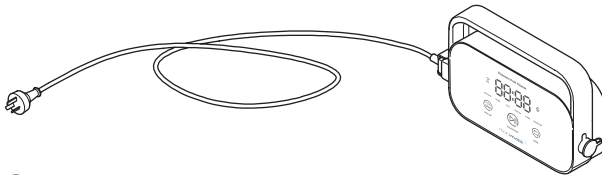


The cleaner and the control box may power off automatically due to triggering of high-temperature if used in working temperature beyond stipulation or subject to high-strength and extended direct sunlight, which may cause damage to the product in severe conditions.

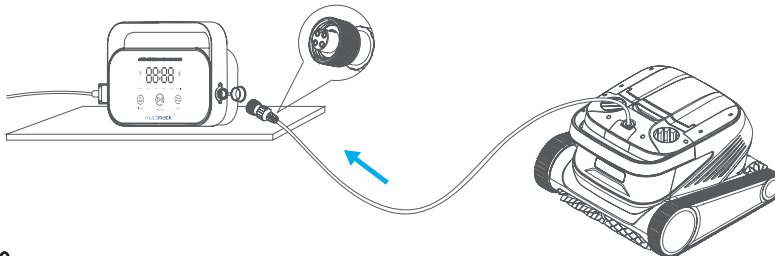
2. Connection and Operation

2.1 Preparation Before Cleaning

1. Place the control box in a shaded and dry place at least 3m away from the pool edge, to avoid direct sunlight.



2. Lay out the cleaner's buoyancy cable straight without any twists, and then insert one end of the buoyancy cable into right interface of the control box, and tighten the nuts.



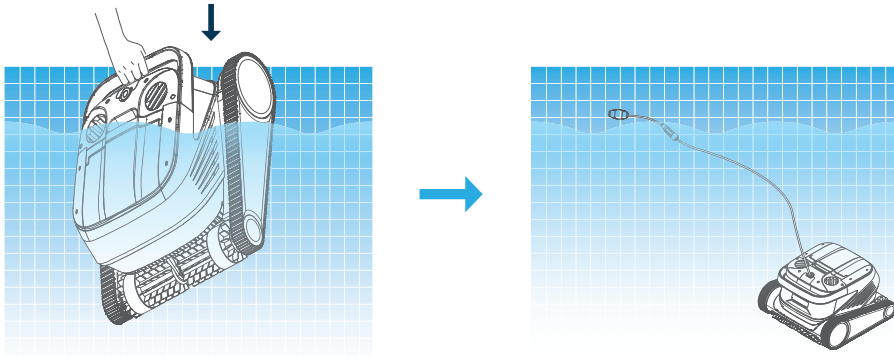
The control box should be placed on a table or other platform off the ground.





2. Connection and Operation

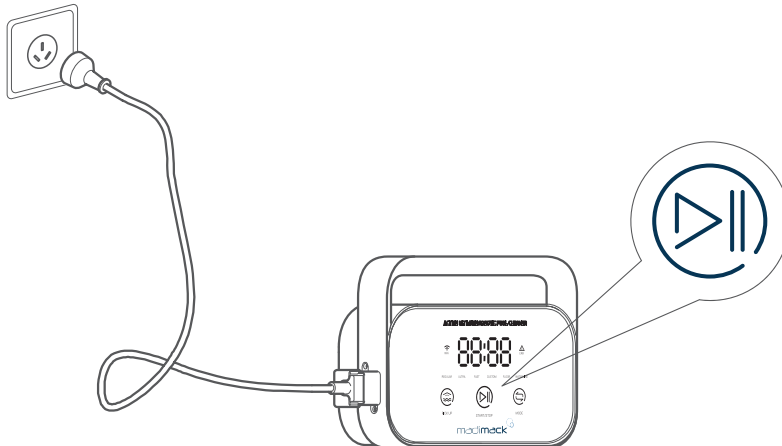
3. Hold handle of the cleaner and place it in water slowly, wait until the cleaner is fully immersed in water and discharges no air, and confirm that the buoyancy cable is not knotted or tangled by an obstacle.



NOTE

Only put sufficient cable into the pool so the cleaner can reach the furthest point + 1 metre. All excess cable should be outside of the pool water. This will allow the cleaner to reach all areas of the pool whilst providing some tension for the swivel to operate as intended.

4. a) Insert power line on the left of the control box into the power supply (AC 100-240 V / 50-60 Hz).
b) At this time, START/ STOP button of the control box will be yellow, while the cleaner enters standby status.



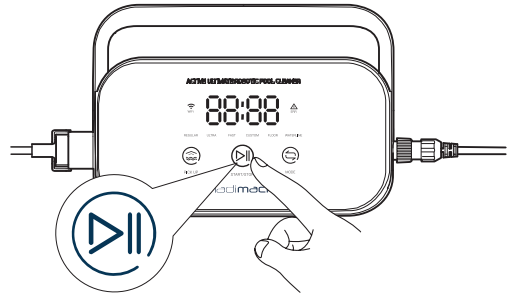
5. Only allow enough cable for the robotic cleaner to reach the furthest point of the pool +1metre. This will allow the robot to swivel and reduce cable tangling.



2. Connection and Operation

2.2 Control Box

1. Basic functional operations of the cleaner can be performed via the control box (more functions can be experienced using App), after selecting corresponding mode, the cleaner can start automatic cleaning of the swimming pool by clicking START/STOP.



2. Interface function and indicator light.

Identification	Description		Light Status	
Button		START/STOP	Short Press: Start/Suspend; Long Press: Stop The yellow light is on when stopped cleaning; The green light is on when starting to clean; The green light flickers when suspending the cleaning; The red light is on in case of abnormality with the control box; The red light flickers in case of abnormality with the cleaner.	
		Pick up	Short Press: enter the one-button pick up mode The light is on when entering Pick up Mode.	
		Mode Switching	Short Press: switch the cleaning mode (custom mode shall be set in APP) The light is on upon selection.	
Indicator Light		WiFi	Connection status of the control box and WiFi The light flickers when the mobile phone/tablet WiFi has access to the control box; and the light is on after the APP connects to the cleaner.	
		Error	The cleaner and the control box prompt error The light flickers in case of abnormalities	
	REGULAR	Standard Mode	2h; pool bottom, pool wall and waterline	If selecting this mode, light of corresponding mode will be on
	ULTRA	Enhancement Mode	3h; pool bottom, pool wall and waterline	
	FAST	Rapid Mode	1h; pool bottom, pool wall and waterline	
	CUSTOM	Custom Mode	Set in APP	
	FLOOR	Pool Bottom Mode	2h; pool bottom	
WATER LINE	Waterline Mode	2h; pool wall and waterline		
Countdown Display		Cleaning Countdown	Displays the remaining cleaning time /	

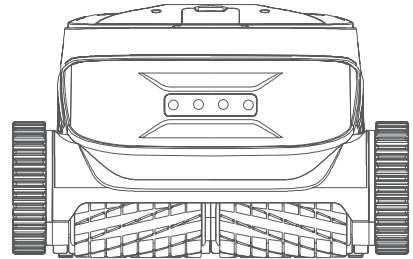




2. Connection and Operation

2.3 Indicator Light of the Cleaner

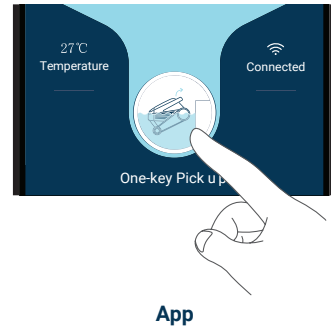
Light Status	Description
White light on	Self-inspecting
Yellow light on	Standby in water
Purple light on	Not placed in water
Green light flickers	Cleaning suspended
Green light on in a circular way	Cleaning
Yellow light is on in a circular way	The filter basket is blocked
Red light flickers	Abnormal errors of the cleaner



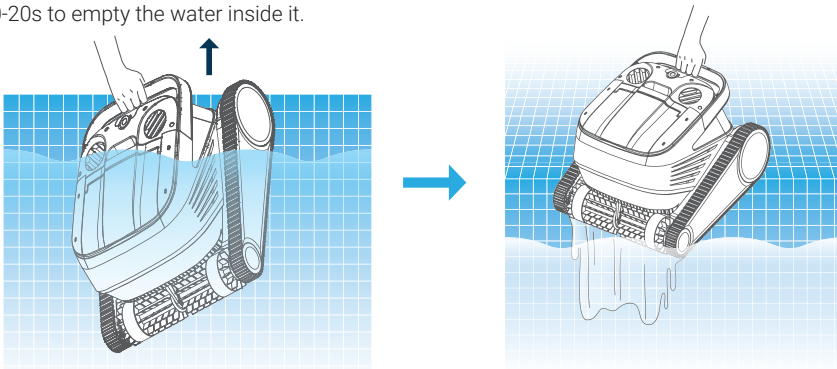
2.4 After Cleaning

Metod 1:

1. Click "One-button Pick up" in the control box or App.



2. Wait for the cleaner to get close to waterline position of the swimming pool automatically.
3. Hold the handle of the cleaner to pull it out of the water surface, and hang it above the water surface for 10-20s to empty the water inside it.

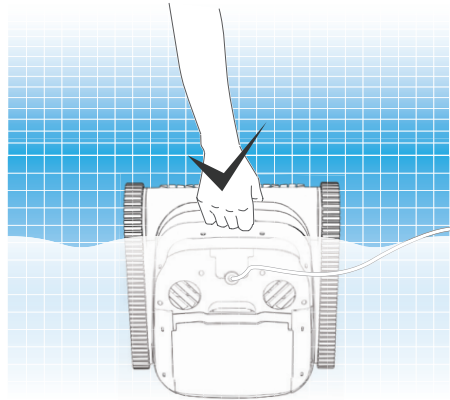
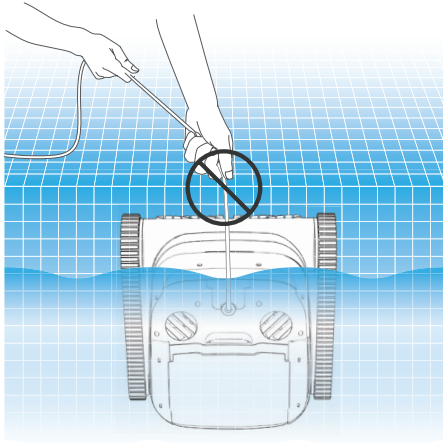




2. Connection and Operation

Metod 2:

1. Stop the cleaner.
2. Pull the buoyancy cable slightly to enable the cleaner in water to move to water side slowly.
3. Hold the handle of the cleaner to pull it out of the water, and hang it above the water surface on pools edge for 10-20s to empty the water inside it.



NOTE

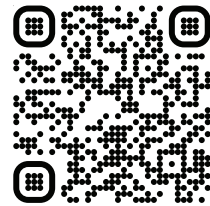
Do not pull the buoyancy cable directly on water surface, so as to avoid fracture and damage.

3. APP



3.1 Download Madimack APP

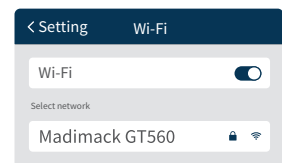
Madimack App: (applicable to iOS 9.0/Android 4.4 and above versions) Scan the QR to download or visit iOS App Store/Google Play/Official Website of Madimack for downloading.



3.2 Wi-Fi Connection

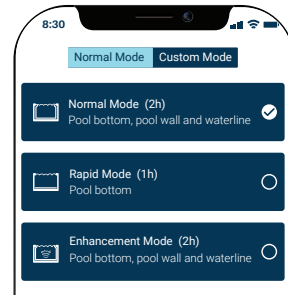
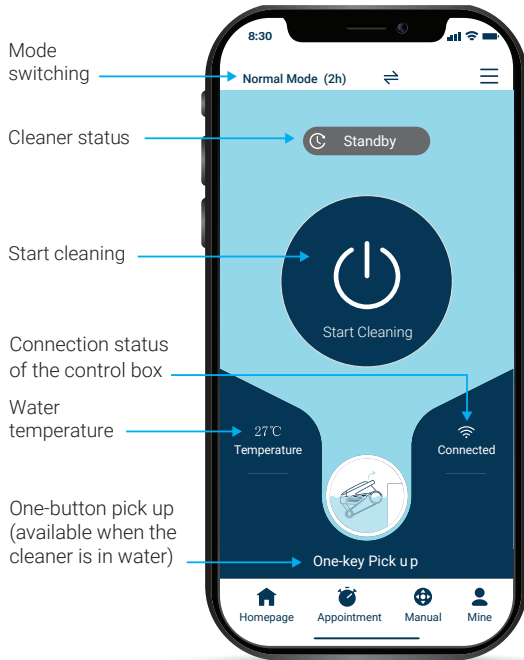
Turn on control box and find "Madimack GT560" on your mobile device setting tab "network selection" and wait for 10-15s, to connect to Madimack GT560.

Wi-Fi Password: Enter your Wi-Fi password.



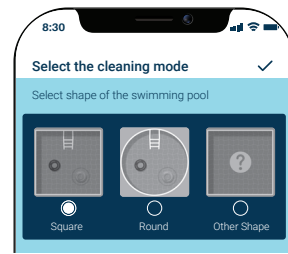
3. APP

3.3 Homepage



Switch to Required Mode

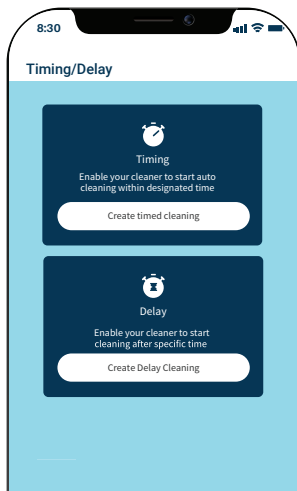
OR



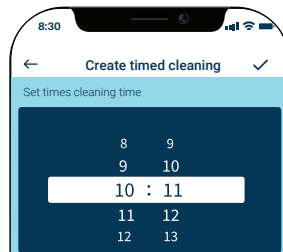
Custom Mode

3.4 Timer

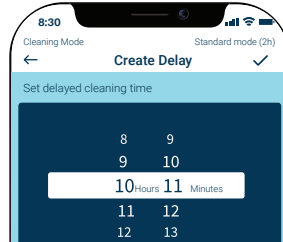
When the cleaner is in standby state and is placed in the swimming pool, create scheduled cleaning for unattended operation.



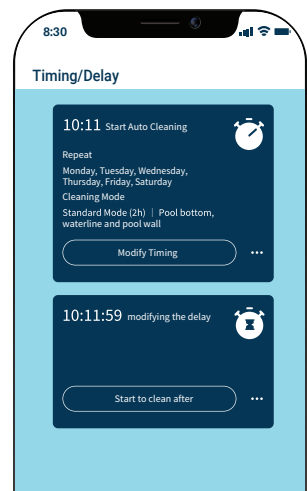
Create Scheduled Cleaning Plan



Enter Create Timing Interface



Enter Create Delay Interface

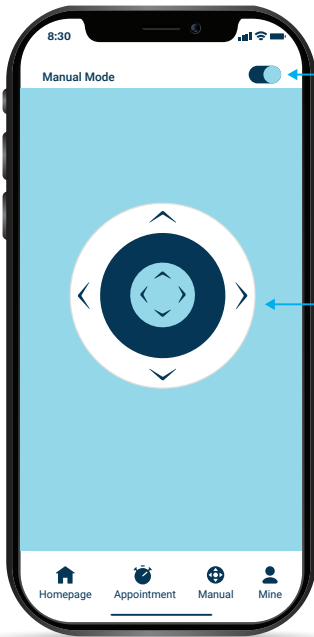


Complete Scheduled Cleaning Plan



3. APP

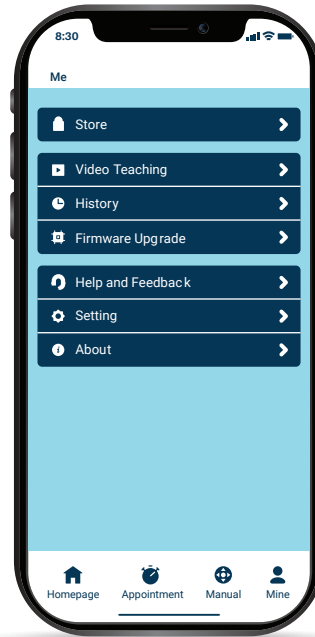
3.5 Manual Mode



Mode switching

Control movement of the cleaner via a remote-control lever

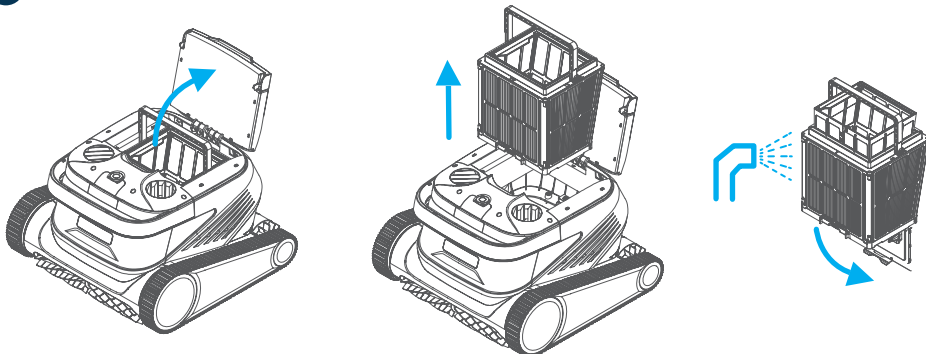
3.6 Me



4. Daily Maintenance

4.1 Clean the Filter Basket

1. Open top cover of the robot, and take out the filter basket.



2. Flush inside and outside of the filter basket with a water gun at low to medium pressure.
3. Place the filter basket back into the cleaner upon cleaning.



Before cleaning, the cleaner shall be disconnected from the power supply first, and the filter basket shall be cleaned every time after use, so as to avoid impact on the cleaning performance.

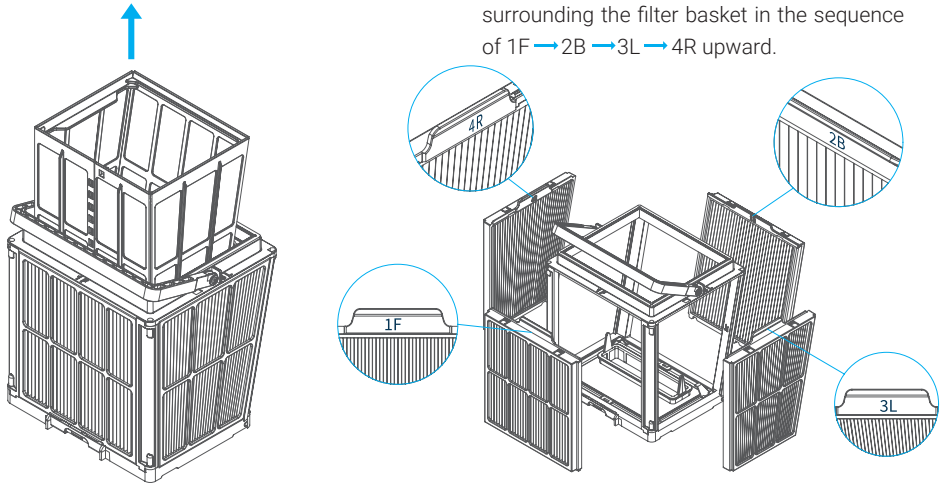




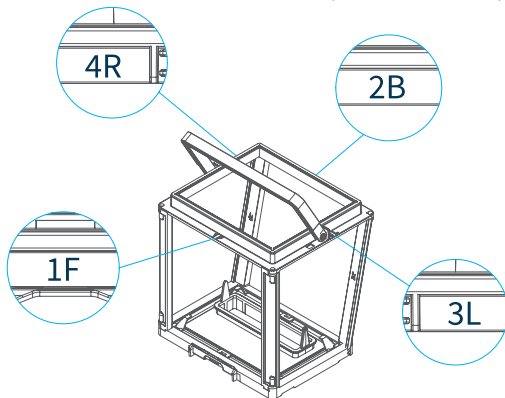
4. Daily Maintenance

4.2 Disassemble and replace the filter board

1. Take net inner out of the filter basket first.
2. Disassembly: Press the filter basket with hands, and then pull out the filter boards surrounding the filter basket in the sequence of 1F → 2B → 3L → 4R upward.



3. Installation: Install the new filter board in the filter basket in the sequence of 4R → 3L → 2B → 1F, and then the replacement is completed.



4.3 Storage

If the cleaner is not used for a long time, please operate according to the following steps:

1. Clean the filter basket and the filter board thoroughly, and then place them in the cleaner.
2. Roll up the buoyancy cable without knots.
3. Store in shaded and dry place at 5-45°C.

5. Fault Information

Fault Phenomena	Possible Causes	Exclusion Method
The buoyance cable fails to be fully stretched.	Too much cable on the pool.	Unplug power line of the control box, and re-arrange the buoyancy cable laying straight in sunlight.
The buoyancy cable is knotted The buoyancy cable is knotted	There are obstacles in the swimming pool.	Remove the obstacles.
	The cleaner runs for a long time without being removed from the pool.	Unplug power line of the control box, and re-arrange the buoyancy cable laying straight in sunlight.
The cleaner is not starting	There is no voltage output from the wall socket.	Inspect whether there is voltage with the socket on the wall.
	The power line fails to be properly inserted.	Insert the power line firmly.
	The buoyancy cable fails to be properly connected.	Inspect whether both ends of the buoyance cable are normally connected.
	The track is stuck by foreign matters.	Check whether the track is stuck and remove the foreign matters.
	The track falls off.	Re-install the track on the drive wheels.
	The cleaner is not placed in water.	Put the cleaner into water.
	The cleaner or the control box is faulty.	Check the error code and contact Madimack after-sales.
The cleaner moves but fails to clean the swimming pool effectively	The filter basket is blocked.	Clean the filter basket.
	The impellers are blocked by foreign matters.	Inspect whether the impellers are stuck and remove the foreign matters.
The cleaner can't climb the wall	The impellers are blocked by foreign matters.	Inspect whether the impellers are stuck and remove the foreign matters.
	The temperature or pH value is improper.	Use in swimming pool conforming to required temperature and PH.
	Algae on the wall.	Inspect chemical substance content in water and scrub the wall.
The cleaner only cleans a part of the swimming pool	The control box is unreasonably positioned.	Place the control box in appropriate position, enabling it to reach various regions of the swimming pool.
	The buoyancy cable is not long enough.	Unplug power line of the control box, and re-arrange the buoyancy cable.
	The filter basket is blocked.	Clean the filter basket.
	There are obstacles in the swimming pool.	Remove the obstacles.

6. Fault Codes

C:00	Robot is out of water
E:00	Communications error
E:01	Abnormal power voltage
E:02	Accelerometer abnormal
E:03	Gyroscope Abnormal
E:15	Left drive motor blockage or failure

E:25	Right drive motor blockage or failure
E:16	Left pump motor blockage or failure
E:26	Right pump motor blockage or failure
E:07	Abnormal air pressure in main cabin
No power	Check power supply



7. Warranty and Exclusions



Standard Conditions

Australia and New Zealand Madimack Pool products. Pty Ltd, distributes Pool products and provides the following warranties:

Statutory Rights

1. The benefits to the consumer under this warranty are in addition to other rights and remedies of the consumer under the laws in relation to the goods and services to which the warranty relates; and
2. Our goods come with guarantees that cannot be excluded under Australian Consumer Law. You may be entitled to a replacement or refund for a major failure and for compensation for any other loss or damage. You are also entitled to have the goods repaired if the goods fail to be of acceptable quality and the failure does not amount to a major failure.

Limited Warranty

Madimack warrants that its products are free from defects in materials and manufacture for 2 years limited from date of supply by Madimack plus 90 days allow for installation and supply (unless otherwise specified). Madimack will at its discretion, except in the circumstances described below, other repair or replace any product proven to be defective during warranty period for either materials or manufacture or alternately pay the cost of repair or replacement within 90 days of the receipt of the defective product, barring unforeseen delays. This warranty is for domestic installation only, is personal to the original purchaser and does not pass any subsequent purchaser(s).

- Consumable components such as brushes, basket, filters, slip rings drain, vacuum flaps, carry a 12 month warranty.
- To the extent permitted by law, Madimack will not be liable for products which fail or become defective during the warranty period as a result of freezing, accident, negligence, improper installation, water chemistry, misuse, tampering or lack of care.
- To the extent permitted by law, except as set out in this Warranty, Madimack excludes all statutory or implied conditions and warranties and any other liability it may have to the Customer (including liability for indirect consequential loss) that may arise under statute or at law including without limitation for breach of contract, in tort (including negligence) or under any other cause of action.
- To the extent permitted by law, except as set out in this Warranty, Madimack limits its liability under any condition or warranty which cannot be legally excluded in relation to the supply of Goods and Services to:
 1. Repairing the Goods;
 2. Replacing the Good or Supplying equivalent Goods or Services again;
 3. Paying the cost of replacing the Goods or of supplying equivalent Goods or Services again; or
 4. Paying the costs of repairing the Goods.

What To Do If You Have Warranty Claim

- The faulty product is to be returned to the place of purchase, or where installed by an approved agent to an authorised warranty agent.
- No returns will be received directly from end consumers by Madimack.

You are responsible for arranging removal of the defective product and arranging installation of the repaired or replacement product, all transportation (and any applicable insurance costs) of transporting the products to the supplier and transporting the replaced or repaired product from the supplier. All returns are subject to Madimack's written approval and must be accompanied by either:

1. A Field Inspection Report authorised by the Local Customer Service Manager or Authorised Agent; or
2. A "Return Goods Authorisation" from Madimack prior to shipment.

This guide may be updated without notice.

Visit the official Madimack website for the latest version: <https://www.madimack.com.au>

